

KASHA

PARIS



GRANDS-AUGUSTINS

CREATED BY ALON & BETSY KASHA

Exceptional views, Paris 6

The views from this lovely apartment are simply stunning...the Seine River and the newly restored Notre Dame Cathedral are beautifully framed in the three floor-to ceiling windows of the large living/dining room. The ceilings are high, measuring 3.4 m in the reception space, as well as the two bedrooms. The floorplan of this 93 m² apartment is well-designed allowing for a gracious entrance hall, large reception room which includes an open-plan kitchen, a guest bedroom and bathroom, and an elegant primary bedroom with an en-suite bathroom and dressing room. A balcony which wraps around the apartment allows one to get even closer to the romantic Parisian views.

- 2nd floor
- 3 rooms
- 2 bedrooms
- 92.66 m² loi Carrez
- 92.66 m² surface area

4 200 000 €

Non-contractual document

KASHA

PARIS



GRANDS-AUGUSTINS
CREATED BY ALON & BETSY KASHA

4 200 000 €

KASHA

PARIS



GRANDS-AUGUSTINS
CREATED BY ALON & BETSY KASHA

4 200 000 €

KASHA

PARIS

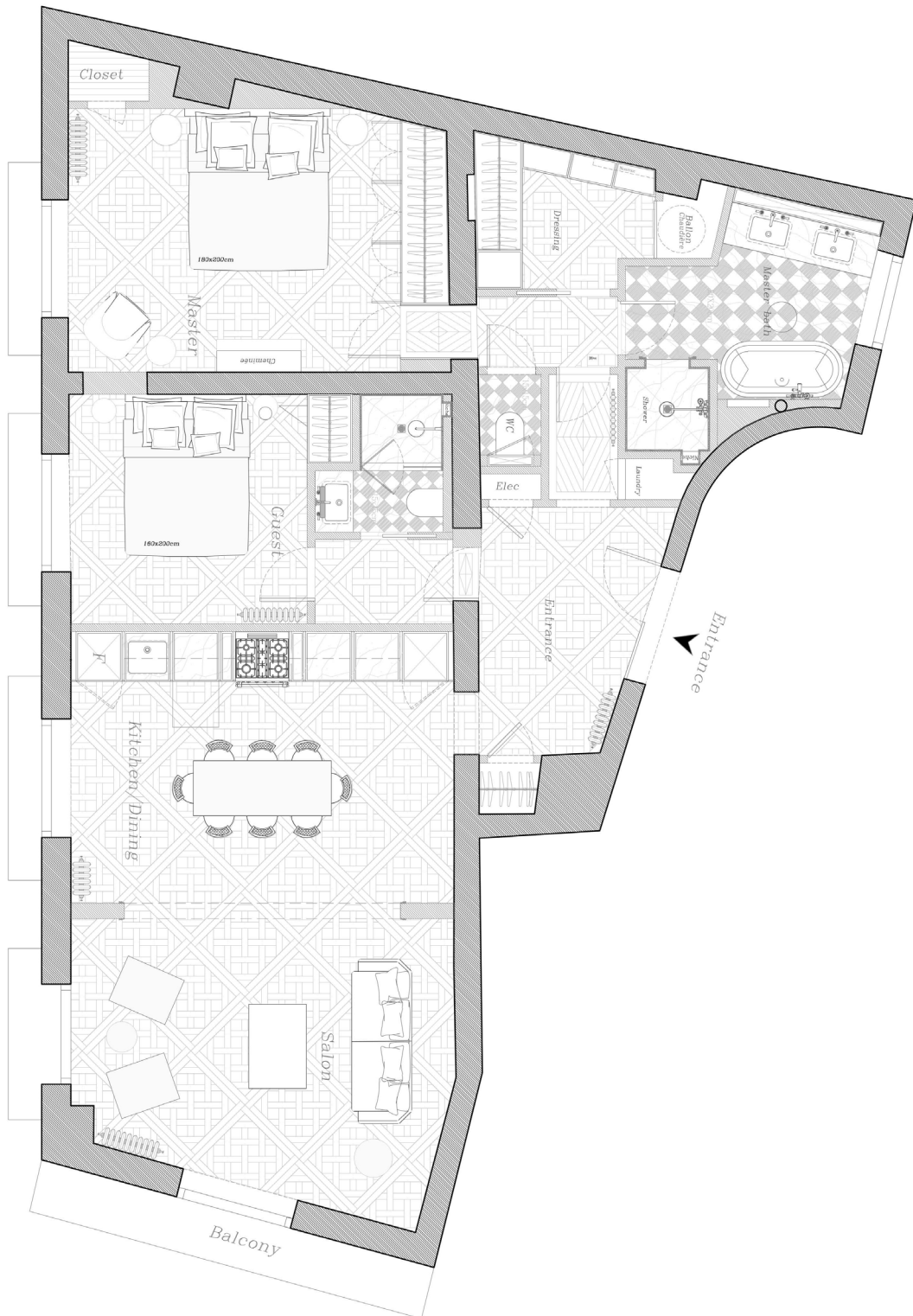


GRANDS-AUGUSTINS
CREATED BY ALON & BETSY KASHA

4 200 000 €

KASHA

PARIS



GRANDS-AUGUSTINS
CREATED BY ALON & BETSY KASHA

4 200 000 €

GRANDS-AUGUSTINS

CREATED BY ALON & BETSY KASHA

THE APARTMENT

- 92.66 m² loi Carrez
- 92.66 m² surface area
- 2nd floor
- 3 rooms
- 2 bedrooms
- 1 bathroom
- 1 shower room
- air conditioning

THE BUILDING

- Monnaie
- Elevator
- Digicode

ADDITIONAL

- Basement

TAXES AND FEES

- Building charges: 2844 € yearly
- Property tax: 1915 € yearly

4 200 000 €

Agency fees to the charge of the seller

The average annual amount of the percentage share of the planned budget related to the current expenses is 2 844 €

The condominium association is not subject to a distress legal procedure

Information on the risks to which this property is exposed are available on the Géorisques website georisques.gouv.fr

