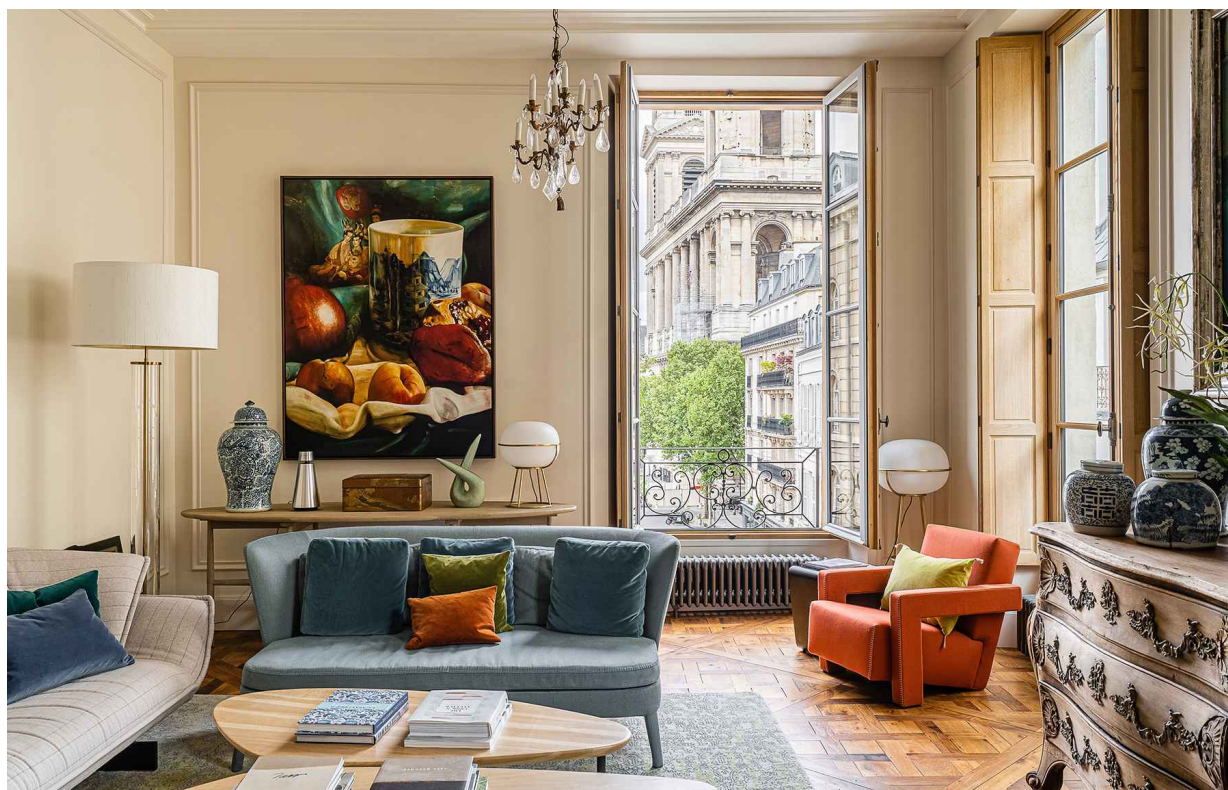


KASHA

PARIS



FÉROU

CREATED BY ALON & BETSY KASHA

An exceptional pied-a-terre, Paris 6

This gracious two bedroom apartment is perfectly located on the beautiful and historical rue Férou, nestled between the Place Saint Sulpice and the Luxembourg Garden. It has been painstakingly and lovingly created by Kasha Paris and has a classic elegance, and is equipped with all the modern amenities. Parquet Versailles flooring throughout the apartment as well as an oak paneled dining room give the apartment a warmth and timeless quality. The high ceilings and large windows create a light and open space. It is truly a gem.

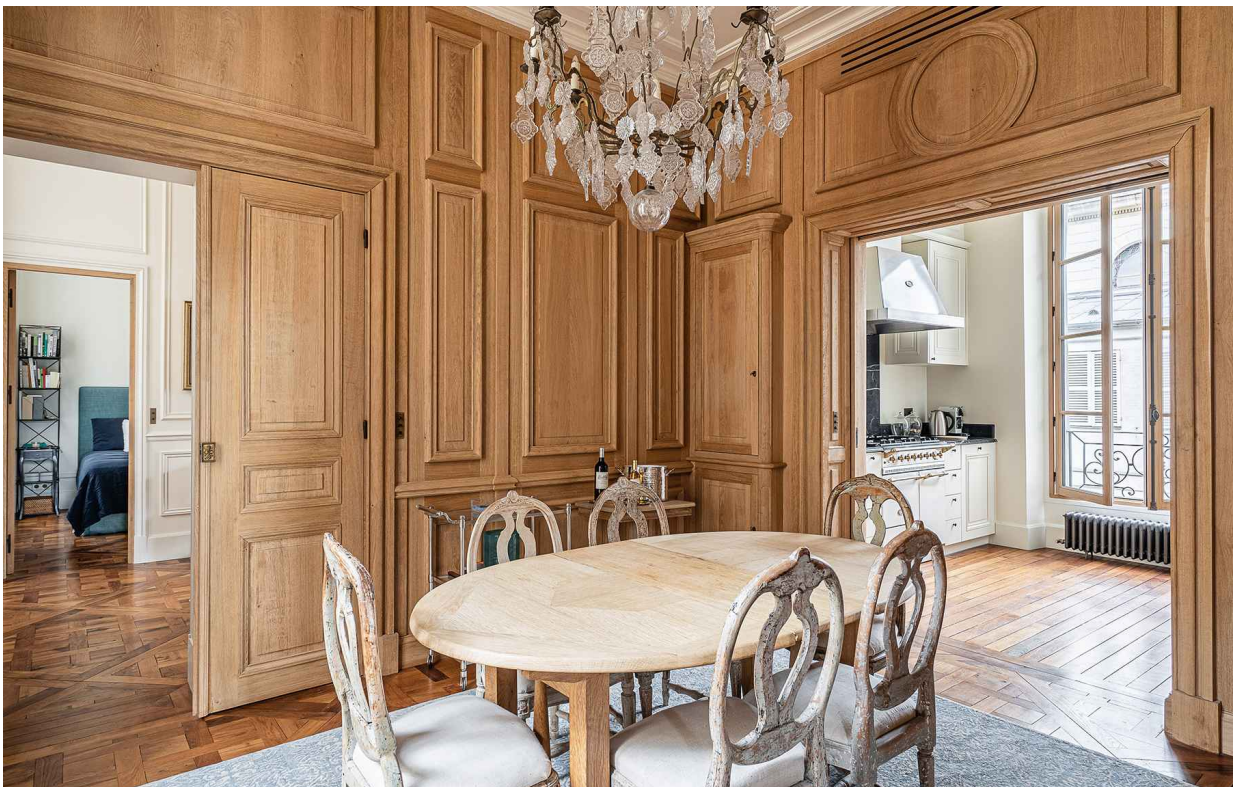
- 2nd floor
- 4 rooms
- 2 bedrooms
- 123.05 m² loi Carrez
- 128.1 m² surface area

4 900 000 €

Non-contractual document

KASHA

PARIS



FÉROU

CREATED BY ALON & BETSY KASHA

4 900 000 €

KASHA

PARIS



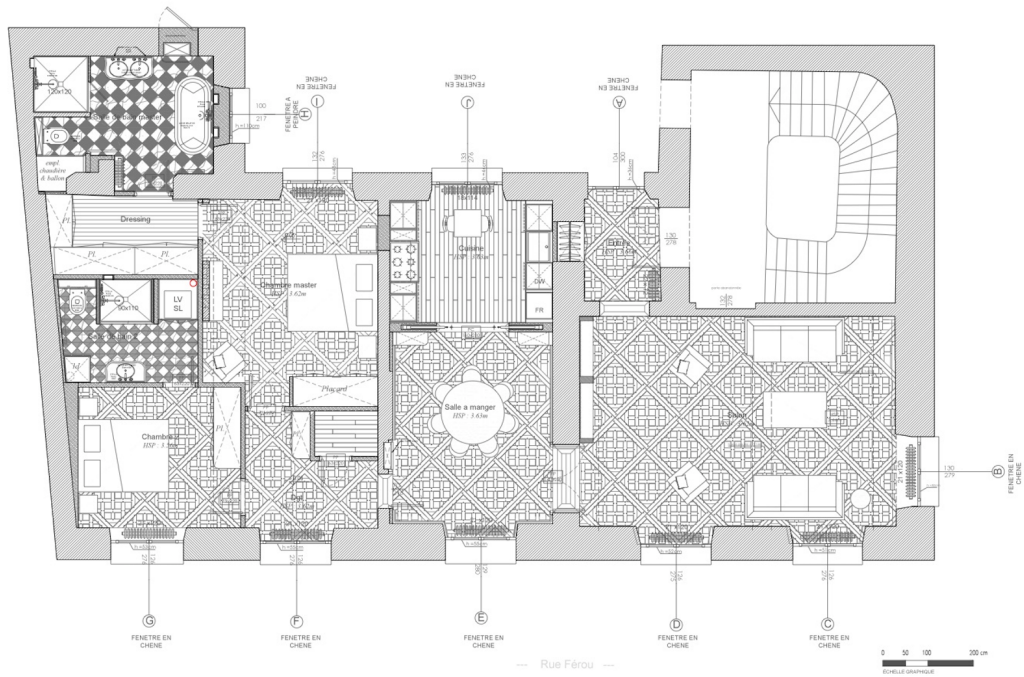
FÉROU

CREATED BY ALON & BETSY KASHA

4 900 000 €

KASHA

PARIS



FÉROU

CREATED BY ALON & BETSY KASHA

4 900 000 €

KASHA

PARIS

FÉROU

CREATED BY ALON & BETSY KASHA

THE APARTMENT

- 123.05 m² loi Carrez
- 128.1 m² surface area
- 2nd floor
- 4 rooms
- 2 bedrooms
- 1 bathroom
- 1 shower room
- air conditioning

THE BUILDING

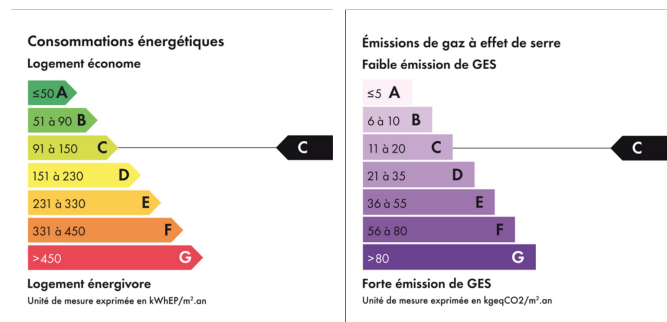
- Saint-Sulpice
- Elevator

ADDITIONAL

- Basement

TAXES AND FEES

- Property tax: 1605 € yearly



4 900 000 €

Agency fees to the charge of the seller

The property is subject to the co-ownership status that is made of 47 lots

The condominium association is not subject to a distress legal procedure